

May 2008
Volume 1, Issue 1

NPEA Newsletter

Board Members and Officers

• President:
Steve Notterman
775-425-3296

• Vice President
East
Keith Anderson
775-296-0547

• Vice President
West
Gary Nezos
775-241-7300

• Secretary/Web
David Kittle
775-867-4067

• Treasurer
Debi Royer
775-241-7502

• Events
Mary
Kuckenmeister
775-267-2059

•Public Relations
Barbara
Rosenberger
775-428-2294

NEVADA DIVISION: Wanted: riders, stories (true or tall), events and expressions.

Welcome 2008

Our annual re-ride is soon coming up. We are currently expected to receive the mail this year at Woodfords Station in Carson City on June 19. In anticipation of the coming ride, we are now (in theory) getting our horses ready for the most exciting event of our year. Hopefully, we will have lots of great weather to condition our horses in and make sure they are all healthy and ready to go.

Our monthly meetings are held the second Thursday of each month and they are filled with lots of information about our re-ride, upcoming events, member news, and just a lot of plain ol companion-ship.

I'd like to take this time to ask each and every one of you to please submit to me any news, invitations, events you'd like to share, birth of new members or any thing you think we

would be interested in. (I will even except cowpoke recipes for everyone to share on the trail).

Please contact Barbara at 775-428-2294 or email me at barbspaints@yahoo.com

Good luck to all in your sections and please everyone, ride safe and happy.

A MESSAGE FROM OUR EASTERN VICE PRESIDENT

To all Nevada Riders:

I have received a letter from Ken Martin representing a committee that has been formed to assist the National Park Service in preparing a new map of the Pony Express National Historic Trail from St. Joe to Sacramento.

Here are several paragraphs describing the project from this letter: " I am sending you a portion of an old map depicting the stations in your state. I want you and/or someone else in your state to make corrections to this map. Some states will be adding and some will be deleting sites.

Please make a list of the stations.....going east to west,

and return this list to me by **AUGUST 15th!!**

We will be numbering these stations on the map.

I would also like to have 3 or 4 line drawings/pen and ink of original Stations in your State. These pictures will frame the map. I would like these in 4" X 6 ""

I would hope that there would be at least one or two other individuals that would be interested in helping me with this project. Any one helping with this project would have to keep track of time spent, description of what time was spent on and the number of miles traveled. This is to help meet challenge cost share efforts with the project.

If you may be interested, please send me an e-mail at kma007@sbcglobal.net . I am only interested in those of you who are truly interested in this project and are willing to commit as much time and effort into this project as it may require. This project is very important and needs to be done thoroughly.

Sincerely
Keith Anderson
775-296-0547

Woodfords/Carson City Ride Captain



Bob Moore
 Ride Captain between Carson City and California. Charter member since 1978
 Division Secretary 1978-79
 State President 1980
 Served on board of directors 78-79-80, 81-83, 88-91
 Served as Quartermaster, Parade Chairman, and Resident Agent to the Corporation.
 Served on the Past State Presidents Committee since its inception.
 Currently serving as one of three Scholarship Administrators
 Has been The Douglas County contact since 1979
 Rode the Slide Ride and Special Olympics Torch Ride
 Has been an honorary life Member of the National Organization since 1998

Warehouse Cr. To behind Walmart and the North Valley Shopping Center to Jacks Valley Rd. The rider the follows Jacks Valley Road/Foothill Road to Genoa.
 About 3 miles beyond Genoa, the trail splits with one leg going up the old Kingsbury toll road and the other proceeding west to Woodsford Ca. via Foothill road and Emigrant Trail. The Re-ride alternates the use of these two sections by going through Woodsford when heading east, and using the Kingsbury route when heading west.
 The Kingsbury route is the more scenic of the two, but also the steepest. Turning off of Foothill Road at the historical marker just south of the Van Sickle Station it goes up the canyon to where it crosses the new Kingsbury highway. It then proceeds up the mountain to just below Dagget Pass. At this point we deviate and proceed around a point in the mountain on a trail which emerges on Tramway Drive by the Country store. Crossing Tramway we head to South Benjamin Dr. then to the Boulder lodge Ski lift parking lot. At the west end of the lot there is a dirt trail which ends at the locked gate to the Parks property. The trail the goes thru the Parks property, passing the original Friday's

Station and emerging on Hwy 50 across from the golf course. The rider then proceeds west on Hwy 50 to Harrah's where the mail is passed to the California rider in front of the Pony Express Statue.

The ride Captain is responsible for making written requests to the Douglas County Sheriff, for escorts and Harrah's for special parking for the Radio group, horse trailers and providing signed release forms for Harrah's and providing written proof of liability insurance in the amount of (currently) 2 million dollars .



Riders and the Trail
 Depending on how many Riders are available, each rider is given about 3 to 5 miles.
 While riding on the pavement we are escorted by a representative of the Douglas County Sheriff's Office.
 The trail between Carson City and California is mostly on the pavement. Leaving third and Curry street, the rider proceeds south on Curry/Cochise to West Clearview where he turns to meet Hwy 395. He then proceeds south on Hwy 395 to Old Clear Creek rd. Going West on Old Clearcreek Rd. to Warehouse Cr., then on

Carson City/Ft. Churchill Ride Captain

Debi Royer: No information at this time.

Ft. Churchill/Top Gun Raceway

Stephanie Pato

Andy Quinn

Stephanie Pato has been in pony express a little over three years, and so far is currently the youngest ride captain. She is the ride captain for the Top Gun Race Way Fallon to Sand Springs. She has ridden in this section all three years in pony express, "It is a great trail and safe if you are a beginner and are looking for an easy trail".

Stephanie has a Co Captain, Andy Quinn. "We are looking for new riders on this section; it is flat almost all the way and trailer assessable so far. There is only one part with some hill and beautiful scenery. We have not seen it yet this year but soon we plan a date to ride or scout the sight and if anyone is interested in venturing out with us you are more than welcome to". Please contact Stephanie Pato at 775-980-7702 or Andy Quinn at 775-577-4626 for more information.

Andy Quinn

Andy has been riding with Pony Express since 2001. He has been riding the Cold Springs/Sand Springs section for the past 3 years and is now venturing off on another section with Stephanie.

Andy is a terrific asset to Pony Express and is a much welcome rider for any section.

Top Gun Raceway/Sand Springs Ride Captains

Nancy Hoggard
Gosh, as a new Ride Captain, I don't have a lot to say.

I'm still organizing--seeing who turns out and what their abilities are.

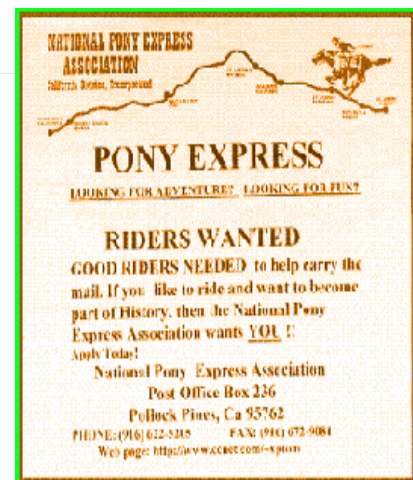
Since our section isn't near the highway--except for the beginning and the end--it's important to me that riders know more of our section than just their part--even if they don't know the entire trail. That way, if someone needs help, there will be someone able to pick up and go on.

Also, I'm hoping to have enough riders to have people ride in parts--again for safety and success.

At the present time, it looks like we're going to have a lot of riders--which would be great.

I also think that it's important to have fun and enjoy the experience.

Nancy



Sand Springs/Cold Springs Ride Captain

Barbara Rosenberger

I started riding the Pony Express re-ride in 1998. I rode the Sand Springs to Top Gun section for 4 years before becoming the ride captain for the Sand Springs to Cold Springs NV section (32 miles) for 3 years (4 now). I usually have 6 - 8 riders who ride anywhere from 1/2 mile to 12 mile sections. The normal section for each rider is 5 miles. We usually get the mail to our designated stop either a little early or at least on time. Our section is a fairly easy section because it follows the HWY for

the most part. We have 2 sections that are pretty rough, but the riders that ride that section love a challenge and consider those sections (up over Sand Springs Pass to Fairview) as just another great ride.

Our section covers the historical Middlegate Station and one of the most famous stations, Cold Springs.

I have had the pleasure of riding my section with what I consider some of the best, most knowledgeable people involved in Pony Express.

I also have the best co-captain

who has volunteered his time, truck, food, knowledge and patience. His name is Walt Lewis. He has been there every step of the way and without him; we would not be as efficient as we are.

I look forward every year to the re-ride itself and being able to have a get together at the end of the ride with all the riders who rode this section and any one else who wants to come enjoy the story of the day and a great pot luck ending.

What a great ending to a wonderful historical event.



Dates to Remember:

- May 8: Member Meeting
- May 10: XP Poker Ride
- May 16: Ely Mail Exchange
- May 17: Trail Ride Challenge
- May 26: Memorial Day Parade
- June 12: Member Meeting
- June 14, 15: Carson Rendezvous
- June 19-21: Annual Re-ride
- June 21: Reno Rodeo Parade
- June 27: Radio Group Potluck

Safety Clinic as scheduled (will notify When the next clinic is)

August 16: Ely Annual Dinner Relay Race. (Contact Keith)

Cold Springs/Railroad Pass Ride Captain

Mike Ryan

Co Captain - Ernie Bugg

Section - Railroad Pass to Grubbs Well West of Austin to east of Eureka.

Mileage about 59
General description - BLM lands mostly but there is also some private ground that we cross. The terrain is from valley floors to mountain summits, sand and meadow valleys to complete rock, no trees to thick Pinion Pine Juniper forests. Depending on the water there is at least two rivers usually flowing, the Reese River and Dry Creek. On a very wet year our group has seen pollywogs in the water that collected along the roads and when it is this wet a person should use a lot of good judgment crossing the desert because there seem to be no bottom in the mud. All the roads we use for trailers are two wheel drives or graded dirt roads. There are several bottoms that are crossed that a driver needs to use caution on. The last several years the Mormon Crickets have been in our area and as the years have gone by they seem to have decreased. I am guessing this year they will be nonexistent as they seem to be cyclic in nature.

This section cross's three mountain ranges, on the west,

the north end of the Shoshone Range, The north end of the Toiyabe Range and the Simpson Park Range on the east.

The XP trail crosses from south of Highway 50 to north just west of Austin.

Ernie and I have two camps in this section making two almost independent teams and it has worked well for us. The distance is too great and the travel times on the asphalt make it a large challenge to get riders in place. We exchange the mail in Rye Patch Canyon from one camp team to the next.

Ernie's group has always camped in Pony Canyon on the west slope of the Toiyabe Range. My camp has varied over the years from Robert's Creek to Grubbs Well and Dry Creek Ranch and no camp at all if time was tight.

The direction of travel for the Pony has had a lot to do with where we camped and so has the weather conditions on Bean Flat.

Our riders generally ride 2-3 mile legs but we have had them cover as much as 12 across the flats on a single horse and over a pass we have ridden 8-9 mile legs and these have been done in both daylight and moonless stormy nights.

Crossing the two eastern

summits the rider is own his own. There is no mobile support across these two areas, both are private lands with permission granted for the riders only. Only our seasoned riders and horses cover these two passes and we try to double up for safety but logistics don't always allow for that.

We are currently interested in recruiting a few more riders and especially horses. Typically we have more riders than horses. Persons interested in this section should be very capable horsemen with lots of good common sense.

A practical truck and trailer for this environment is important as well. Horseshoes are a must. Drive time from Carson with a trailer depending how fast you drive about five plus hours for a fuel stop in Fallon and again in Austin for the good fuel.

You can contact Mike at
775-885-9352

GRUBBS WELL/OVERLAND PASS RIDE CAPTAIN

Steve Notterman: No information at this time.

OVERLAND PASS/IBAPAH RIDE CAPTAIN

Tony Zamora: No information at this time.

SCHELLBOURNE RE-RIDERS:

Ride Captain this year is Tony Zamora. This is his 4th year as our Ride Captain. Handling all of our secretarial needs falls to Wendy Anderson. She has been filling this office for the past 4 years. John Cavigilia handles all our Treasury needs. He has been actively involved in every aspect of Pony Express for the group since the early 80's. Keith Anderson keeps us all informed with all the latest information concerning State Pony Express events. He has been involved with Pony Express since the early 80's too.

We are planning on participating in an Educational Mail Ride between two Elementary Schools in White Pine County in May. We deliver letters from grade school students either from David E. Norman over to McGill Elementary or visa/versa.

Our conditioning rides are due to start every weekend beginning the first weekend in May.

We have approximately 35 riders signed up to ride this year. They have come to ride with us from as far away as California, Arizona, Utah and Idaho in the past.

This year we will be getting the mail at the top of the Diamonds (above Eureka) sometime late on June 20th or really early on June 21st. We will have all our riders lined out across approximately 146 miles.

Our group crosses 7 mountain ranges and in one place we can't even get a vehicle there. We haul all our own fuel, water, food etc., because there are no towns from the start of the trail to the end of our ride. Schellbourne Re-Riders love this stretch of the trail, because it reminds us of what it really must have been like back in the beginning.

When we finish the ride, this year we will be looking forward to camping out at Hicks Ranch for a good BBQ dinner and a good night's sleep. We're all looking forward to June and the re-ride. Happy Trails!!!

XP Poker Ride:

When - Saturday, **May 10th** ride starts at 10:30 AM

Where – **Scout Camp**- Fort Churchill State Park

Check in between 9:30 AM and 10:30 AM at the Registration table

Why – This is a fundraiser with all proceeds going to help fund the National Pony Express Conference hosted by the Nevada Division this September.

Cost - 15.00 per hand (if registration is received by 4/30) or \$20.00 the day of the ride.

Extra cards can be purchased for 2.00 each (limit 3)

\$1.00 per entry enter as often as you like

Contact - Mary 775-267-2059 or Debi 775-241-7502

For entry form email nv_xp_events@charter.net

There is a \$4.00 per vehicle fee at the Park entrance

Cash Prizes

Also enter the **50/50**

www.nps.gov/poex

www.nevadaponyexpress.org

www.xphomestation.com

www.ksponyexpress.com

www.ponyexpressnationaltracking.com

QUARTERMASTER / JILL ANDREWS

Jill has been involved with Pony Express since 1997. She has been the ride captain for the Top Gun/Sand Springs section for several years. She has recently turned over her duties to Nancy Hoggard so that she can dedicate more time to a job she does very well.

Jill is our Quartermaster and has done a terrific job of supplying our team mates, stores, museums, tourist, townspeople, and just about everyone within earshot of her "Pony Items For Sale" shout.

Jill has everything (almost) you can imagine for Pony Express. If you

need anything, ask, and you shall receive.

Jill usually has everything she has for sale in her vehicle for purchase at the meetings, in your shop or on the road.

If you have any requests, please contact Jill at

775-423-4740

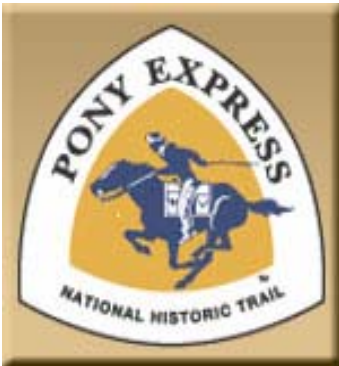
SAFETY COMMITTEE: SAUNYA BOLTON

As most of you know by now, to participate in ANY public event, you must be certified via Saunya's safety clinic.

This is to insure insurance coverage should anything "unexpected" happen from our horses or riders.

The next clinic has not been posted at this time, but you can expect that Saunya will have another one as soon as weather permits.

Saunya can be reached at 775-971-1815 for scheduling.



NPEA Oath:

"I,, do hereby swear, before the great and living God, that during my engagement as a member of the National Pony Express Association Re-Run, I will under no circumstances use profane language, that I will drink no intoxicating liquors,

that I will not quarrel or fight with any other member of the Association, and that in every respect, I will conduct myself honestly, be faithful to my duties and so direct all my acts as to win the confidence of my associates. So help me God.



**BARBARA
ROSENBERGER
775-428-2294**

If you have any announcements, requests, information, or additions you would like to see in the newsletter, please, contact me and I'll put it in the next issue.